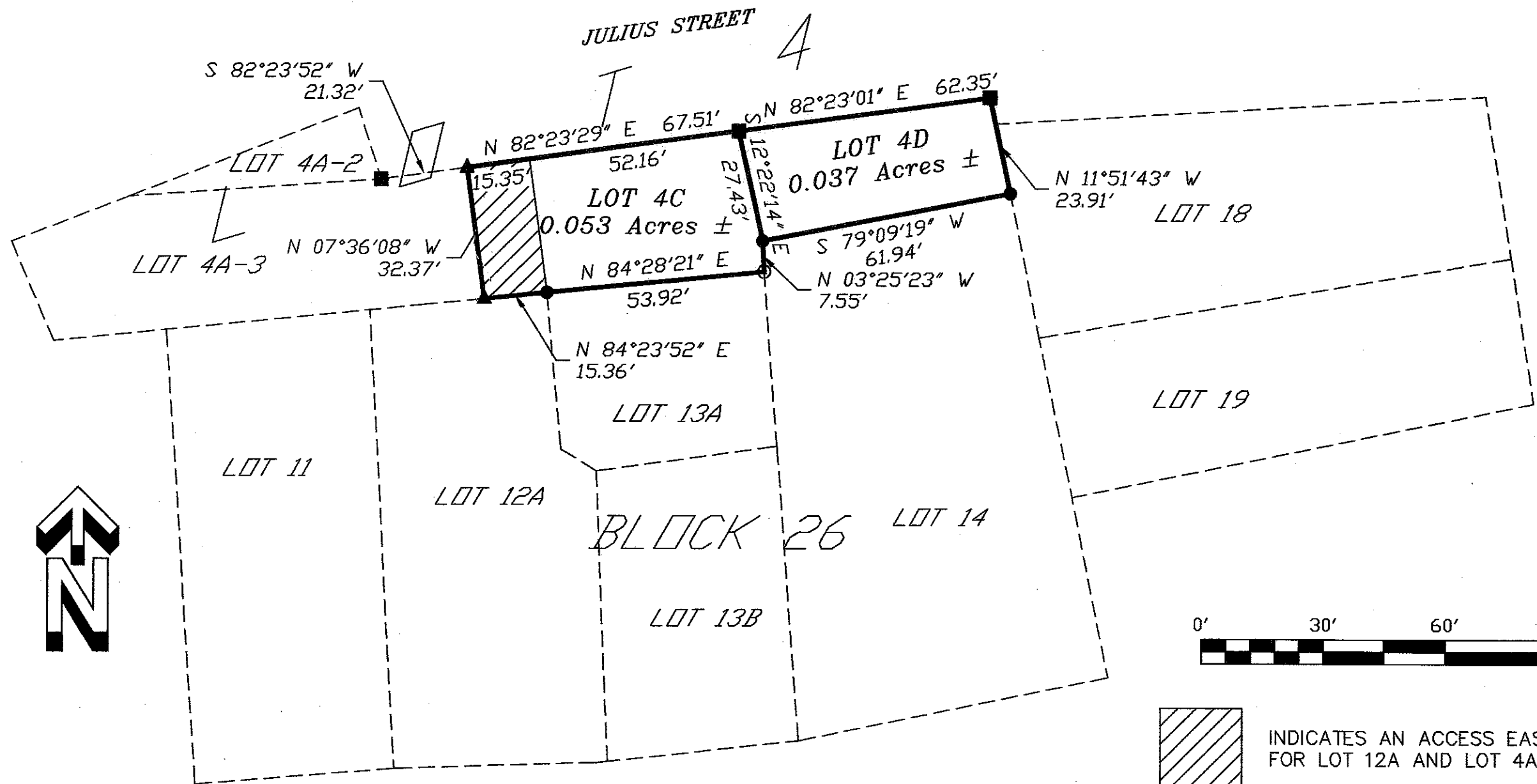
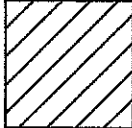


PLAT OF LOTS 4C AND 4D, BLOCK 26  
 ORIGINAL TOWNSITE, CITY OF LEAD  
 BEING A PORTION OF LOT 4, BLOCK 26  
 LAWRENCE COUNTY, SOUTH DAKOTA



SURVEYOR'S CERTIFICATE

-  INDICATES AN ACCESS EASEMENT FOR LOT 12A AND LOT 4A-3
- REBAR & CAP (VREM LS6577)
- ▲ REBAR & CAP (ARLETH 3977)
- MAG NAIL
- REBAR & CAP (LS6117)