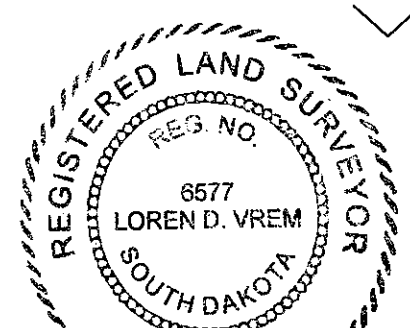
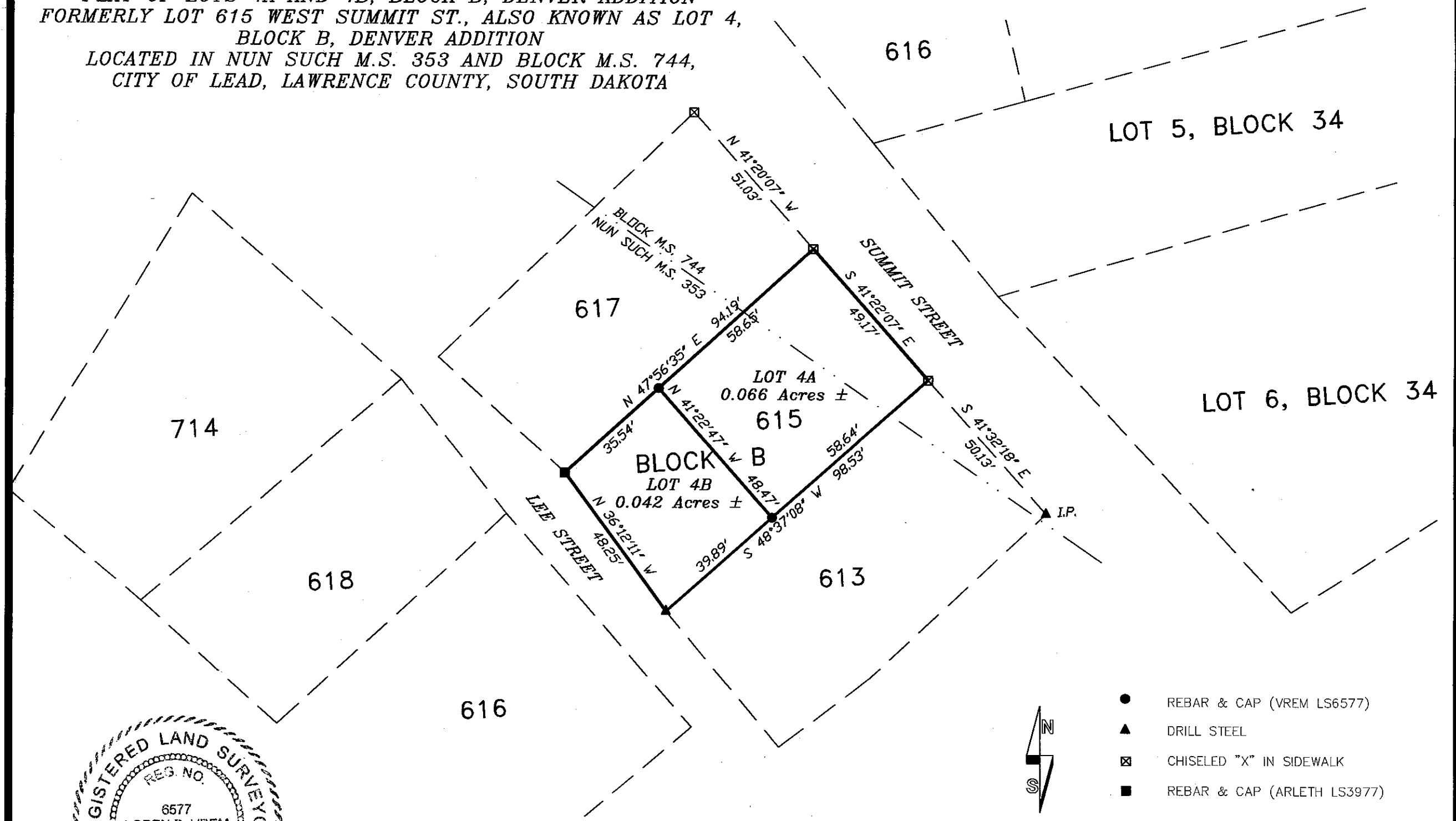


PLAT OF LOTS 4A AND 4B, BLOCK B, DENVER ADDITION
 FORMERLY LOT 615 WEST SUMMIT ST., ALSO KNOWN AS LOT 4,
 BLOCK B, DENVER ADDITION
 LOCATED IN NUN SUCH M.S. 353 AND BLOCK M.S. 744,
 CITY OF LEAD, LAWRENCE COUNTY, SOUTH DAKOTA



- REBAR & CAP (VREM LS6577)
- ▲ DRILL STEEL
- ⊠ CHISELED "X" IN SIDEWALK
- REBAR & CAP (ARLETH LS3977)

